

代码编制规则 Part Number

1	2	3	4	5	6	7	8	9	10	11	12	13	14	15	16	17	18	19
F	C	C	4	A	A	T	3	3	7	K	L	2	7	5	6	A	1	A
电容器类型 Capacitor Type	产品外形 Product Shape	额定电压代码 Rated Voltage Code (AC)	系列代码 Series Code	容量代码 Capacitance Code	容量偏差 Capacitance Tolerance	直径 Diameter	高度 Height	引出端子 Terminals Type	引出端子 间距 Terminals Pitch	底部螺栓 Bottom Bolt	图号 Style							
FC=Film Capacitor	Column=C	230=2D	CBB235=AT	60=606	±5%=J	86=L	160=160	3pin=3	15/20=A	With=1	Style A							
		400=4A	CBB235Y=AY	100=107	±10%=K	116=P	200=200	M5 6pin=6	35=B	Without=0	Style B							
		440=4E		330=337	-15~0%=P	136=T	230=230	M6 6pin=5										
		480=4J		750=757	Special=S	96=W	265=265	3pinM6 螺杆=1										
		530=5D		900=907			275=275	3pinM8 螺杆=2										
		660=6G		1000=108			350=350	3pinM10 螺杆=4										

Features

- Used in AC filtering or power factor correction
- PP film design, good temperature characteristics
- Stable capacity
- Low ESR, high RMS current handling capabilities
- Overpressure disconnection device
- Self-healing property
- Aluminum case, filled with soft PU resin
- Three phase in one cylinder aluminum can

特点

- 交流滤波或功率因数校正
- 采用聚丙烯薄膜，温度特性好
- 容值稳定，变化率小
- 等效串联电阻小，承受较大的有效值电流
- 过压力断开装置
- 有自愈性
- 铝壳，软树脂灌封
- 三相电容器，封装在一个铝壳内

Applications

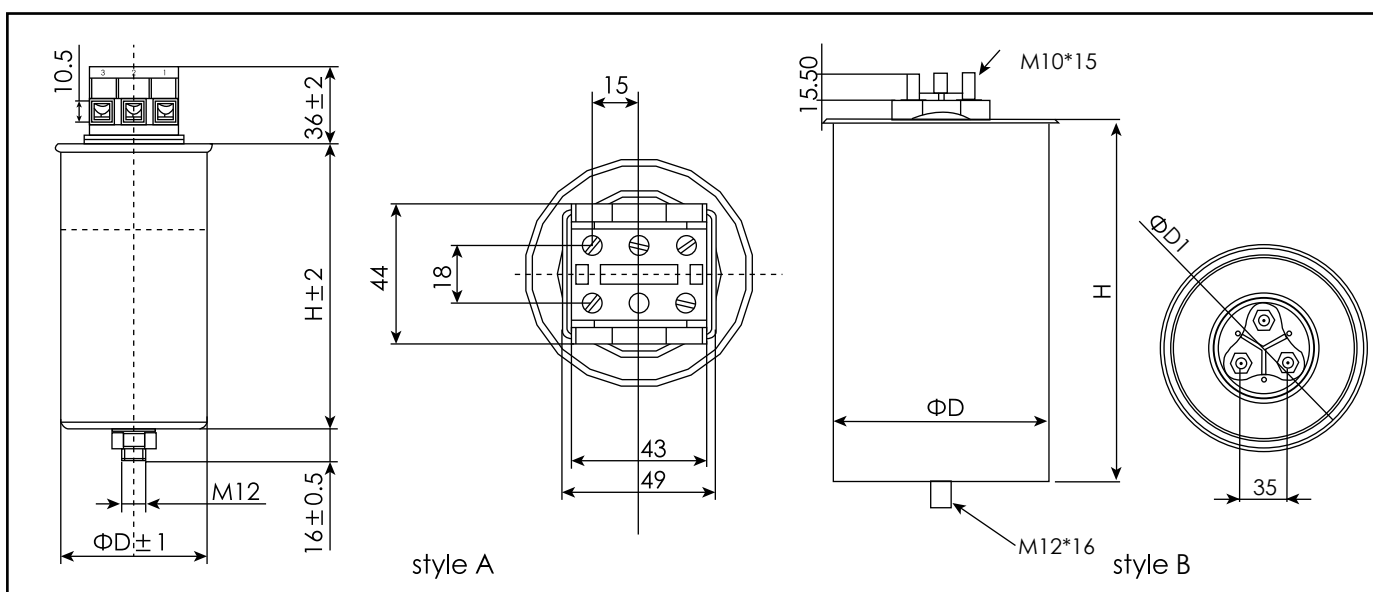
- Wind energy, Solar
- Power factor correction

应用场合

- 风能，太阳能
- 功率因数校正

外形图 Dimensions

Unit: mm



标识 Marking

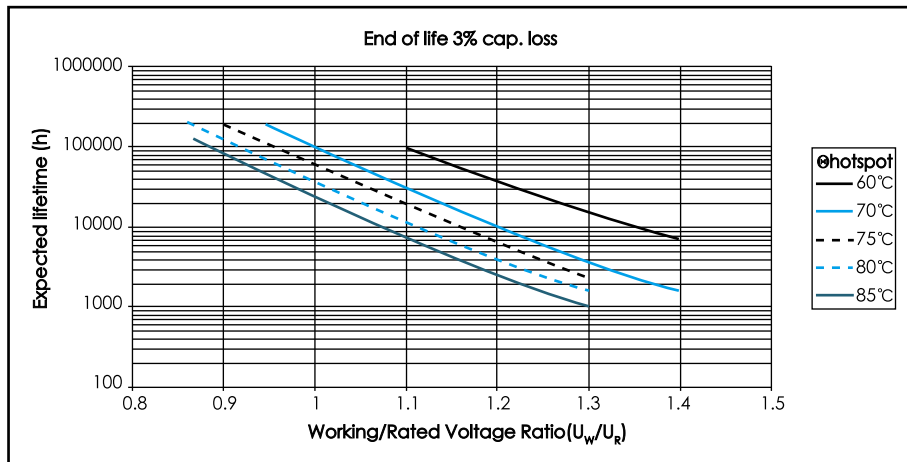
	1
CBB235	2
3 × 110.7 μF ± 10% Δ	3
$U_R = 400V_{AC} SH$	4
$U_{TC} = 4000V \ 50/60Hz$	5
-40~+70°C IEC61071	6
Discharge before handling	7
J32F36	8

NO.	项目 Item
1	商标 Brand
2	产品系列 Products series
3	容量和偏差 Capacitance and Tolerance
4	额定电压和自愈性 Rated voltage and Self-healing property
5	端子与铝壳电压 U_{TC} Voltage Between Terminals and Case
6	温度范围 Temperature Range 引用标准 Reference Standard
7	安全警示 Safety warning
8	日期代码 Date code

性能特性 Specifications

项目 Item	特性 Characteristics
引用标准 Reference Standard	GB/T 17702 (IEC 61071) , IEC60831
气候类别 Climatic Category	40/85/56
工作温度范围 Operating Temperature Range	-40~+70°C ($\Theta_{\text{hotspot}} \leq 85^\circ\text{C}$)
存储温度范围 Storage Temperature Range	-40~+85°C
额定电压 U_R Rated Voltage	230~690V _{AC}
电容量范围 Capacitance Range	3*20.3 ~ 3*335 μF
电容量偏差 Capacitance Tolerance	$\pm 5\%$ (J), $\pm 10\%$ (K)
端子与端子电压 U_{TT} Voltage Between Terminals	2.15 U_N (V _{DC}), 10s(20 °C)
端子与铝壳电压 U_{TC} Voltage Between Terminals and Case	4000 V _{AC} , 10 s(20 °C, 50 Hz)
介质损耗角正切 Dielectric Dissipation Factor	0.0002
绝缘电阻 Insulation Resistance	$\geq 5000\text{M}\Omega \cdot \mu\text{F}$ (20°C, 100V _{DC} , 1min)
过电压 Over Voltage	1.1 U_R (30% of on-load-duration)
	1.15 U_R (30 min/day)
	1.2 U_R (5 min/day)
	1.3 U_R (1 min/day)
	1.5 U_R (30 ms every time, 100ms/day)
最大电极扭矩 Max Torque of terminals	M5: 2 Nm, M6: 3 Nm, M8: 4 Nm, M10: 6 Nm
最大安装扭矩 Max Torque of installation	M12: 10 Nm
预期寿命 Life Expectancy	100000 hours ($U_R, \Theta_{\text{hotspot}} = 70^\circ\text{C}$)
失效率 Failure Rate	100 FIT

预期寿命曲线 Expected lifetime curve



警告 Cautions and warnings

- In case of dents of more than 1 mm depth or any other mechanical damage, capacitors must not be used at all.
电容器如有深度超过1毫米的凹痕或其他机械损伤不可以使用。
- To ensure the full functionality of the overpressure disconnector, elastic elements must not be hindered and a minimum space of 12 mm has to be kept above each capacitor.
为了保证过压力断路器的全部功能，每个电容器上方须有至少12毫米的空间，弹性元件不能被阻碍。
- Do not handle the capacitor before it is discharged.
在电容器放电之前，不能处置电容器。
- The threaded bottom stud of the capacitor has to be used for grounding. The maximum tightening torque is 12Nm.
电容器的底部螺杆仅用于接地使用，最大扭矩12Nm。
- Do not use or store capacitor in corrosive atmosphere, in the dusty environments regular maintenance and cleaning especially of the terminals is required to avoid conductive path between phase / or phase and ground.
电容器不能用在或存储在腐蚀性环境。在多灰尘的环境里，要求定期维护和清洁，特别是电极端子，以避免相与相间或相与地之间有导电通路。
- Do not have unlimited service life expectancy, the max service life expectancy may vary depending on the application the capacitor is used in.
电容器的寿命是有限的，最大工作寿命因使用条件的不同而不同。

规格标准 Standard Ratings

Urms/U _N	C _R	P/N	Output	Irms	f	dv/dt	D	H
(V _{AC})	(μF)	-	50Hz (Kvar)	50°C (A)	(A)	(V/μs)	(mm)	(mm)
230/325	3×200.6	FCC2DAT207*L275*A1A	10.0	25.1	5021	25	86	275
	3×200.6	FCC2DAT207*P160*A1A	10.0	25.1	5021	25	116	160
	3×250.7	FCC2DAT257*L350*A1A	12.5	31.4	6276	25	86	350
	3×250.7	FCC2DAT257*P200*A1A	12.5	31.4	6276	25	116	200
	3×300.9	FCC2DAT307*L350*A1A	15.0	37.7	7531	25	86	350
	3×300.9	FCC2DAT307*P200*A1A	15.0	37.7	7531	25	116	200
400/560	3×335.0	FCC2DAT337*P230*A1A	16.7	41.9	8384	25	116	230
	3×66.3	FCC4AAT666*L200*A1A	10.0	14.4	2887	44	86	200
	3×82.9	FCC4AAT836*L200*A1A	12.5	18.0	3609	44	86	200
	3×99.5	FCC4AAT996*L275*A1A	15.0	21.7	4330	44	86	275
	3×110.7	FCC4AAT117*L275*A1A	16.7	24.1	4821	44	86	275
	3×110.7	FCC4AAT117*P160*A1A	16.7	24.1	4821	44	116	160
	3×132.6	FCC4AAT137*L275*A1A	20.0	28.9	5774	44	86	275
	3×132.6	FCC4AAT137*P200*A1A	20.0	28.9	5774	44	116	200
	3×165.8	FCC4AAT167*L275*A1A	25.0	36.1	7217	44	86	275
	3×165.8	FCC4AAT167*P200*A1A	25.0	36.1	7217	44	116	200
	3×198.9	FCC4AAT197*T200*A1A	30.0	43.3	8661	44	136	200
	440/625	3×46	FCC4EAT466*L160*A1A	8.3	10.9	2178	48	86
3×68.5		FCC4EAT686*L200*A1A	12.5	16.4	3280	48	86	200
3×77.0		FCC4EAT776*L200*A1A	14.1	18.5	3700	48	86	200
3×77.0		FCC4EAT776*P160*A1A	14.1	18.5	3700	48	116	160
3×82.2		FCC4EAT826*L200*A1A	15.0	19.7	3937	48	86	200
3×92.6		FCC4EAT926*P200*A1A	16.9	22.2	4435	48	116	200
3×103.0		FCC4EAT107*L275*A1A	18.8	24.7	4934	48	86	275
3×103.0		FCC4EAT107*P160*A1A	18.8	24.7	4934	48	116	160
3×109.0		FCC4EAT107*L275*A1A	20.0	26.2	5249	48	86	275
3×109.0		FCC4EAT107*P160*A1A	20.0	26.2	5249	48	116	160
3×123.3		FCC4EAT127*L275*A1A	22.5	29.5	5905	48	86	275
3×123.3		FCC4EAT127*P200*A1A	22.5	29.5	5905	48	116	200
3×137.0		FCC4EAT137*L275*A1A	25.0	32.8	6561	48	86	275
3×137.0		FCC4EAT137*P200*A1A	25.0	32.8	6561	48	116	200
3×154.0		FCC4EAT157*L275*A1A	28.1	36.9	7375	48	86	275
3×154.0		FCC4EAT157*P200*A1A	28.1	36.9	7375	48	116	200
3×164.4		FCC4EAT167*L350*A1A	30.0	39.4	7873	48	86	350
3×164.4		FCC4EAT167*P200*A1A	30.0	39.4	7873	48	116	200
3×180.9	FCC4EAT187*T200*A1A	33.0	43.3	8661	48	136	200	
480/680	3×40	FCC4JAT406*L200*A1A	8.7	10.5	2093	52	86	200
	3×60	FCC4JAT606*L275*A1A	13.0	15.6	3127	52	86	275
	3×80	FCC4JAT806*P200*A1A	17.4	20.9	4186	52	116	200
	3×120	FCC4JAT127*P275*A1A	26.0	31.3	6255	52	116	275
530/750	3×38.5	FCC5DAT386*L200*A1A	10	11.0	2199	57	86	200
	3×48.1	FCC5DAT486*L200*A1A	12.5	13.7	2749	57	86	200
	3×53.1	FCC5DAT536*L200*A1A	13.8	15.2	3035	57	86	200
	3×57.7	FCC5DAT576*L230*A1A	15.0	16.5	3299	57	86	230
	3×77.0	FCC5DAT776*L275*A1A	20.0	22.0	4399	57	86	275
	3×77.0	FCC5DAT776*P200*A1A	20.0	22.0	4399	57	116	200
	3×96.2	FCC5DAT966*L350*A1A	25.0	27.5	5499	57	86	350
	3×96.2	FCC5DAT966*P200*A1A	25.0	27.5	5499	57	116	200
	3×115.4	FCC5DAT117*P230*A1A	30.0	33.0	6598	57	116	230
	3×115.4	FCC5DAT117*T200*A1A	30.0	33.0	6598	57	136	200
	3×138.2	FCC5DAT137*P275*A1A	35.9	39.5	7896	57	116	275
	3×138.2	FCC5DAT137*T230*A1A	35.9	39.5	7896	57	136	230
	3×142.8	FCC5DAT147*P275*A1A	37.1	40.8	8160	57	116	275
	3×142.8	FCC5DAT147*T230*A1A	37.1	40.8	8160	57	136	230
660/930	3×20.3	FCC6GAT206*L200*A1A	8.33	7.3	1457	72	86	200
	3×24.4	FCC6GAT246*L200*A1A	10.0	8.7	1750	72	86	200
	3×30.4	FCC6GAT306*L230*A1A	12.5	10.9	2187	72	86	230
	3×36.5	FCC6GAT366*M230*A1A	15.0	13.1	2624	72	96	230
	3×40.7	FCC6GAT406*M230*A1A	16.7	14.6	2922	72	96	230
	3×48.7	FCC6GAT486*L350*A1A	20.0	17.5	3499	72	86	350
	3×55.8	FCC6GAT556*L350*A1A	22.9	20.0	4007	72	86	350
690/980	3×27.9	FCC6KAT276*L230*A1A	12.5	10.5	2092	75	86	230
	3×33.4	FCC6KAT336*M230*A1A	15.0	12.6	2510	75	96	230
	3×44.6	FCC6KAT446*L350*A1A	20.0	16.7	3347	75	86	350
	3×55.7	FCC6KAT556*L350*A1A	25.0	20.9	4184	75	86	350

可根据客户要求定制。Customer products are available on request.